

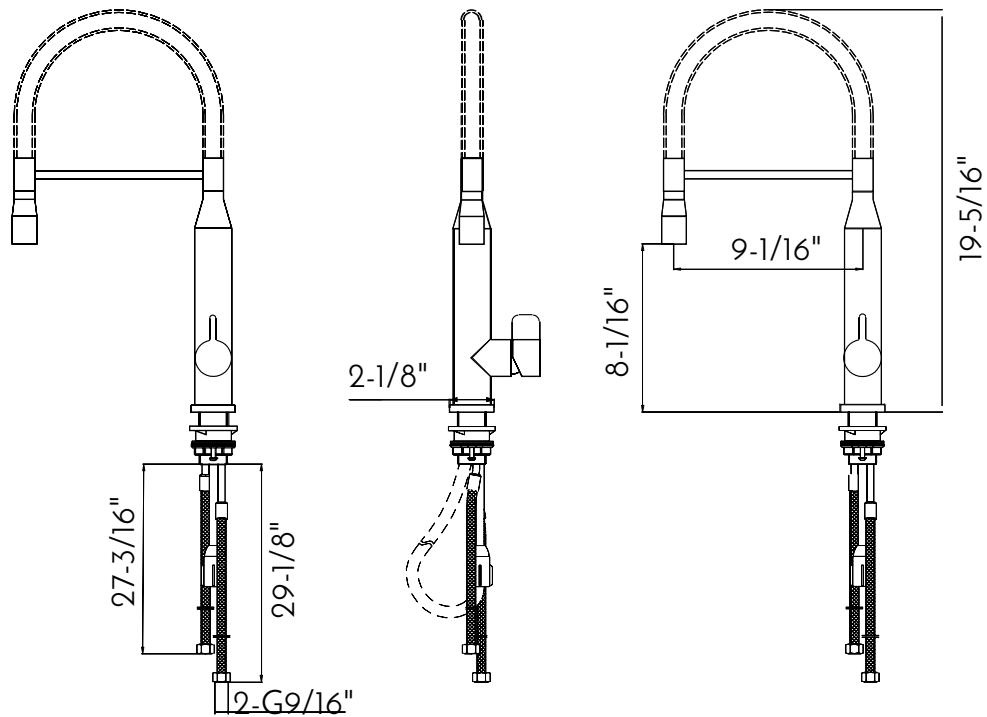


DAX-S1095A



KITCHEN FAUCETS SERIES





FEATURES

- Pull down shower head
- Brushed stainless steel finish
- 304 stainless steel body casting
- Single sprayer
- Stainless steel shower head
- Ceramic cartridge
- Flow rate 2.2 GPM
- Height 19-5/16"
- Installation hole 1-3/8"
- Water lines and mounting parts included

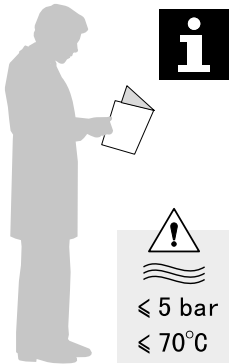




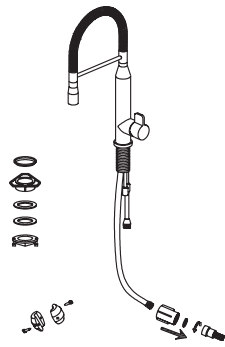
KITCHEN FAUCET DAX-S1095A

MODEL	DAX-S1095A
ADA	NA
UPC APPROVED	NA
ANSI APPROVED	NA
ASME APPROVED	NA
WATERSENSE CERTIFIED	NA
NSF APPROVED	NA
CONNECTION SIZE	G9/16
FAUCET HOLE SIZE	NA
FAUCETS HOLE	NA
FAUCET TYPE	Nozzle
FLOW RATE (GPM)	≤2.2GPM
HANDLE STYLE	Side lever
NUMBER OF HANDLES	1
HEIGHT	19-5/16"
HOSE LENGTH	23-5/8"
INSTALLATION TYPE	Deck mount
MATERIAL	SUS304
FINISH	Brushed stainless steel
PULL OUT SPRAY	Nozzle
PRE-RINSE	NA
SIDESPRAY	NA
SPOUT REACH	8-1/2"
SPOUT HEIGHT	20-1/2"
SPOUT SWIVEL	360°
SPOUT TYPE	High throw
CARTRIDGE TYPE	45-45°
MAX DECK THICKNESS	2"
INCLUDED COMPONENTS	Water lines and mounting parts

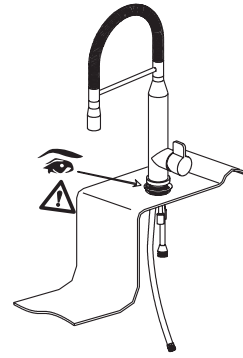




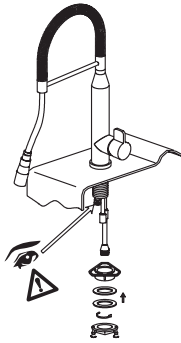
01



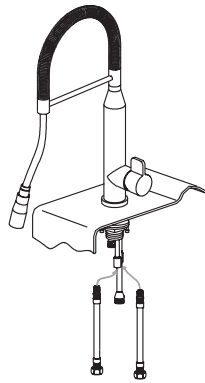
02



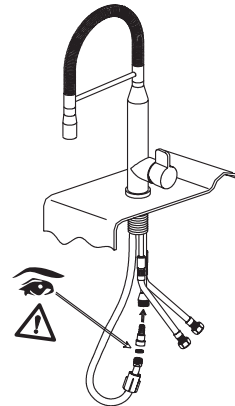
03



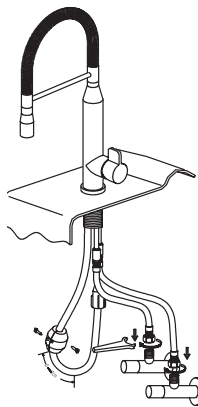
04



05



06



i

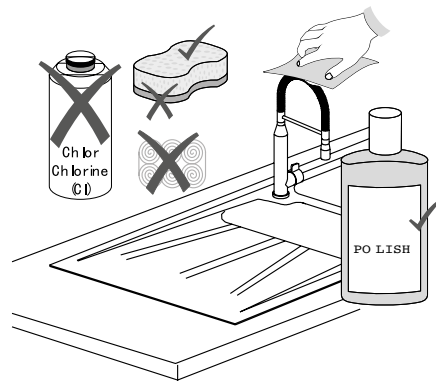
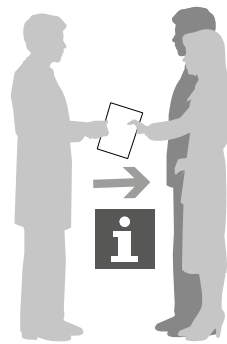
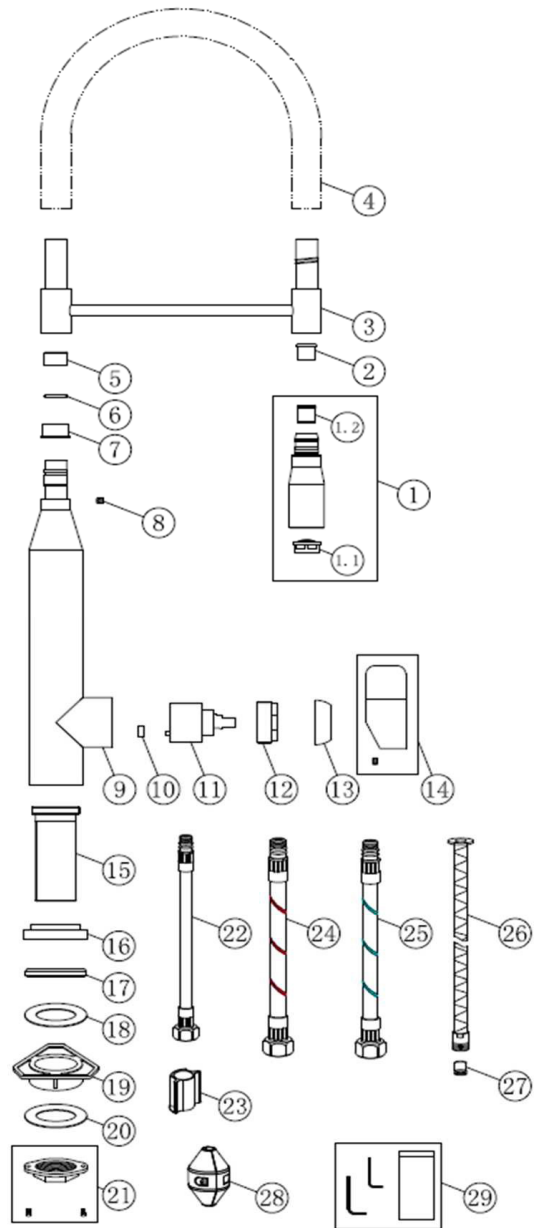




DIAGRAM NUMBER	DAX SKU	TITLE DESCRIPTION
1	190011906	Shower assembly
1.1	190004165	Neoperl Aerator
1.2	190013153	Check valve
2	190004053	Plastic sleeve
3	190006728	Mandrel
4	190009424	Spring
5	190001340	Sleeve,Plastic
6	190004090	Rubber ring
7	190001965	Ring,Plastic
8	190004658	Screw
9	190014127	Tube assembly,body
10	190007530	Restrictor
11	190004166	Cartridge
12	190004083	Press cover
13	190013018	Cover
14	190011588	Handle assembly
15	190013933	Shank
16	190013257	Base
17	190006241	Rubber ring
18	190004111	Rubber ring
19	190002413	Plastic Fixed Set
20	190000798	Plate
21	190010566	Screw nut assembly
22	190013208	Hose
23	190013360	Plastic
24	190012682	Hose
25	190012683	Hose
26	190005530	Hose
27	190013118	Check valve
28	190012832	Weight
29	190011426	Allen wrench kit



For parts or sale requirements please contact our customer service department:

CS@daxib.com

1 888 685 8236